

Now that you've struggled with all the topics, let's review them. We'll start with the F.R of the first practice test; the first problem uses the EMUAs...

did someone mention ordering pizza tomorrow?

May 4-7:53 AM

EMUA

$x =$

$v_0 =$

$v =$

$a =$

$t =$

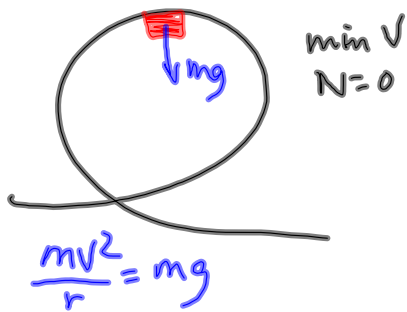
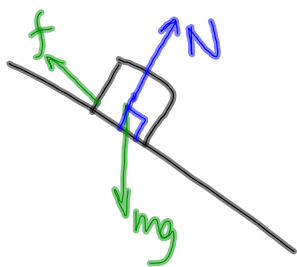
MOTION (NO FORCES)
YET...)

$$F = ma$$

May 4-12:16 PM

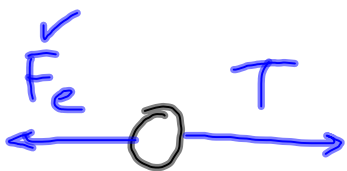
NORMAL FORCE

- SUPPORT FORCE \perp SURFACE
- CONTACT FORCE

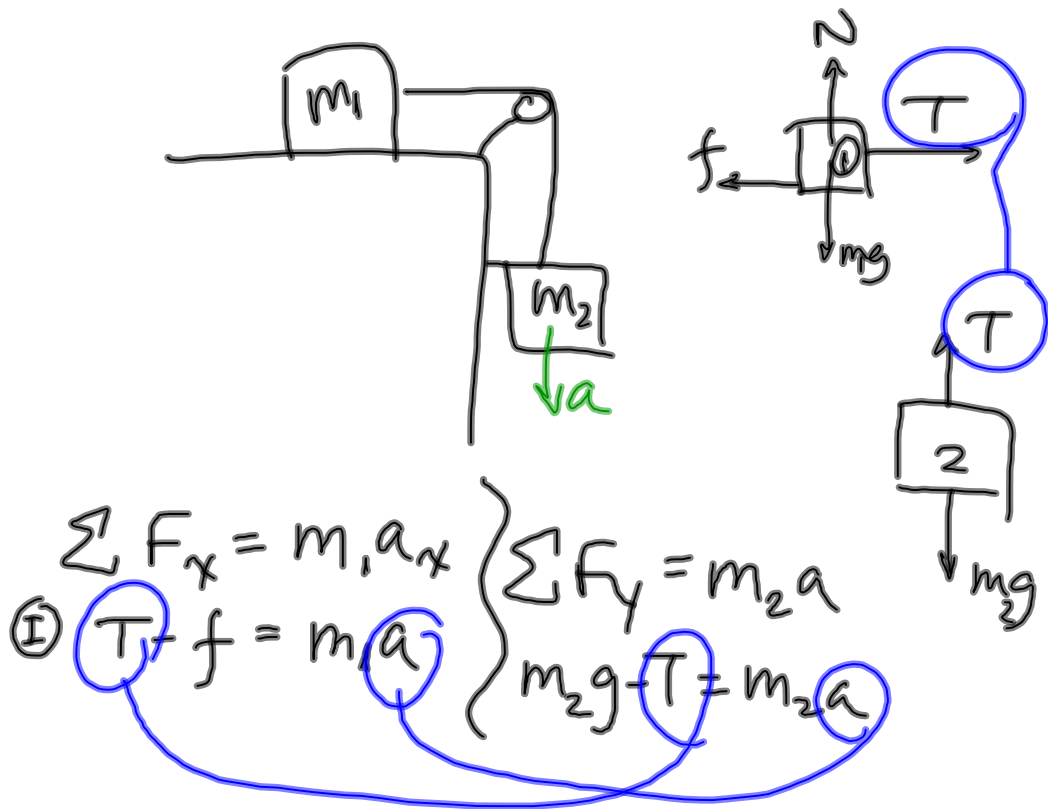


May 4-12:21 PM

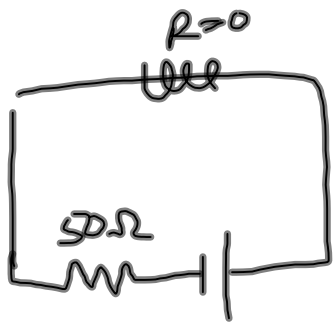
#3 Fall



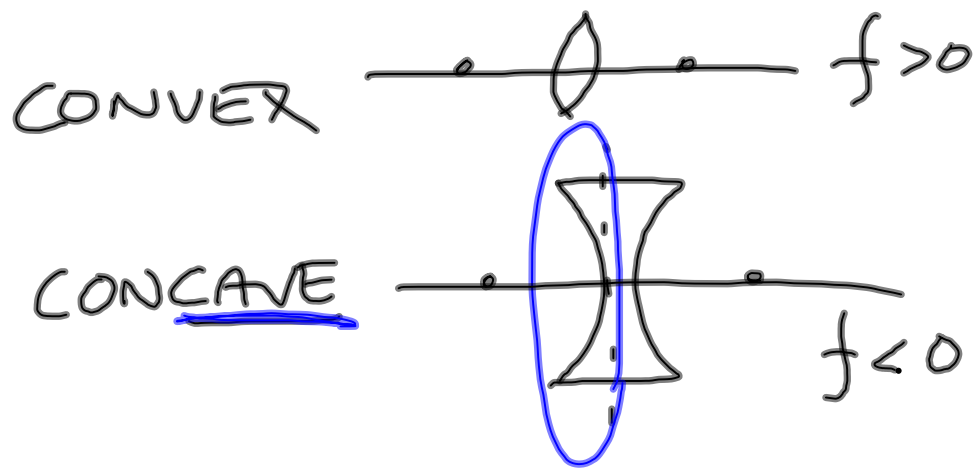
May 4-12:24 PM



May 4-12:26 PM



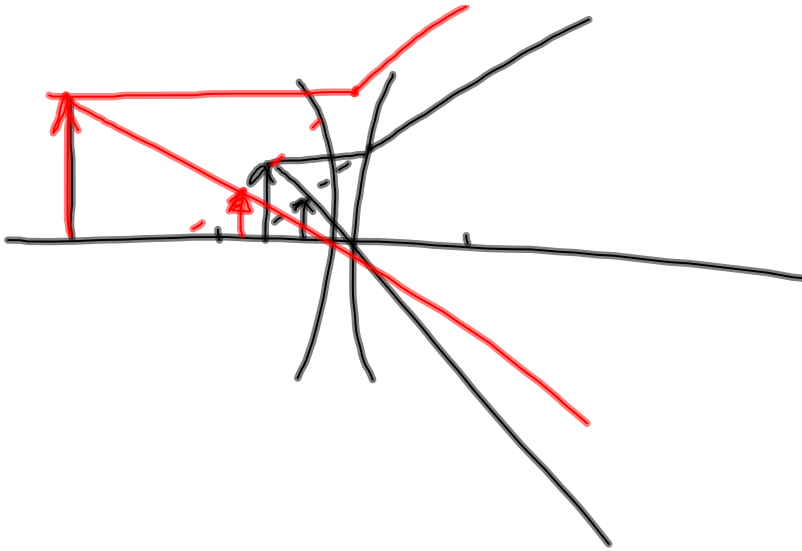
May 4-12:36 PM



May 4-12:47 PM

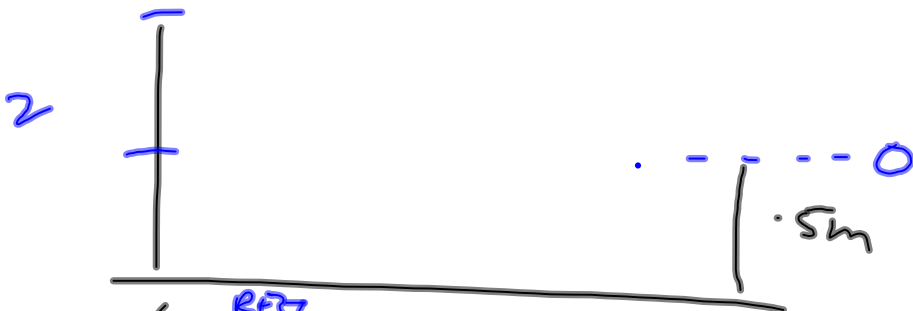


May 4-12:48 PM



May 4-12:49 PM

(11) FR II



$$(k + U_g)_i = (k + U_g)_f$$

$$\eta gh = \frac{1}{2} \rho v^2$$

$$v = \sqrt{2gh} \rightarrow 2-5$$

May 4-12:53 PM